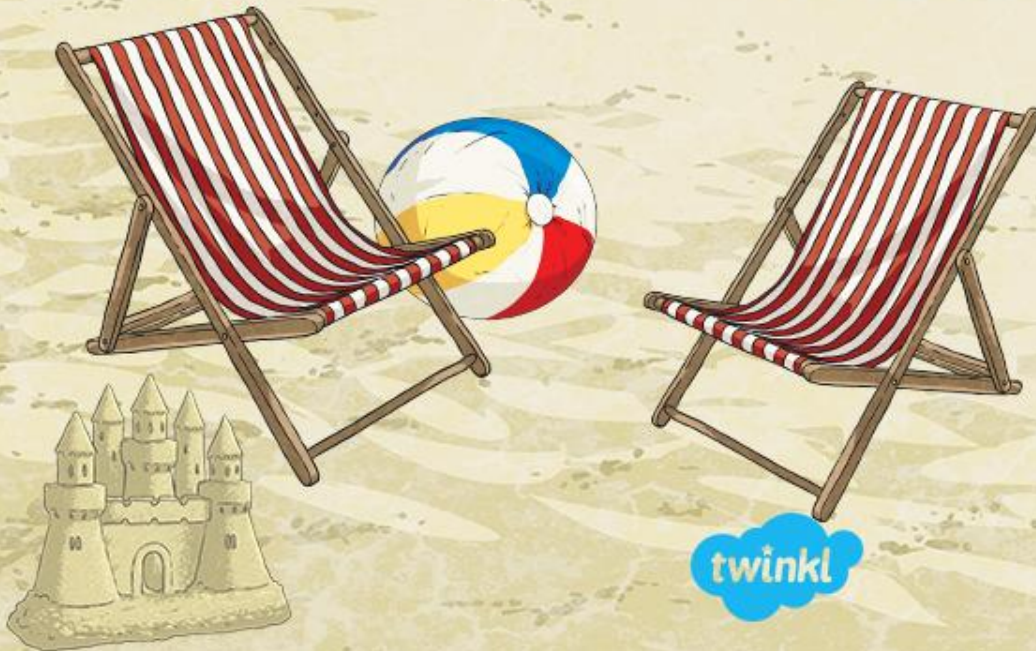


Summer 9

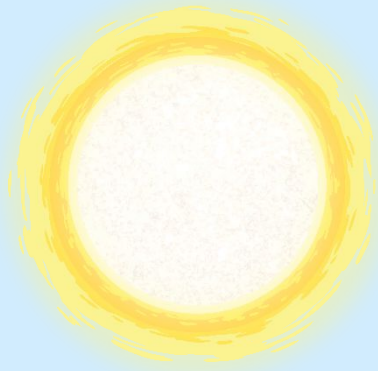


Fluency, Reasoning and Problem-Solving

Morning Starter



twinkl



Monday

Tuesday

Wednesday

Thursday

Friday



+ and -

$3500 + 600 =$



Reveal answer

$1030 - 500 =$



Reveal answer

× and ÷

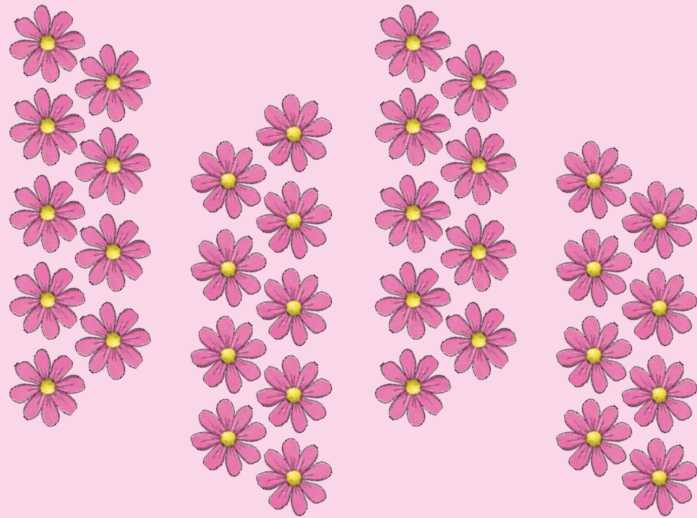
$3 \times 4 \times 6 =$



Reveal answer

$44 \div 9 =$ **4 remainder 8**

Reveal answer



Place Value

Reveal answer

Write five thousand and twelve in numerals.



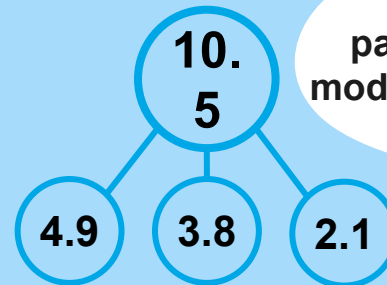
Problem Solving

Reveal answer

Alison buys a book for £3.49 and pays with a £5 note. She gets three coins as change. What coins does she get?



Reasoning



Is my part-whole model correct?



Explain your reasoning.

+ and -

6 3 6 0

+ 7 7 5 4

1
4

Reveal answer



× and ÷

2 × 9 × 8 =

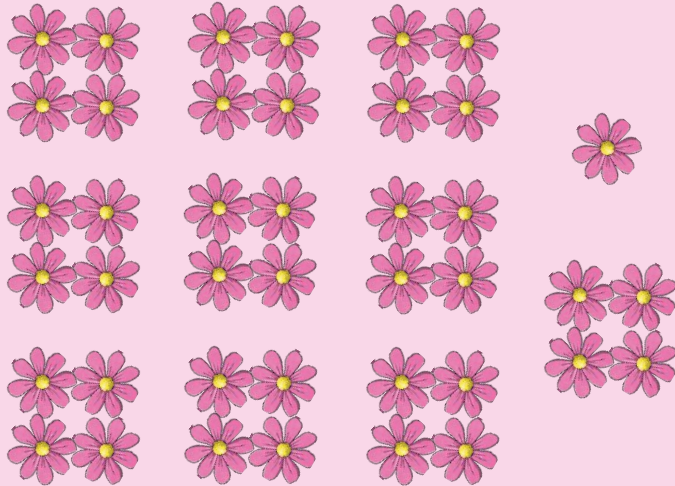


Reveal answer

41 ÷ 4 =

10 remainder 1

Reveal answer



Place Value

Reveal answer

How many if I have one thousand less?



Problem Solving

Reveal answer

How many lines of symmetry has this parallelogram?

0




Reasoning

If I count in multiples of twenty-five I will say the number 475.




Is Alison correct? Explain your reasoning.

+ and -


$12 + 89 =$ 

Reveal answer

$300 - 205 =$ 

Reveal answer

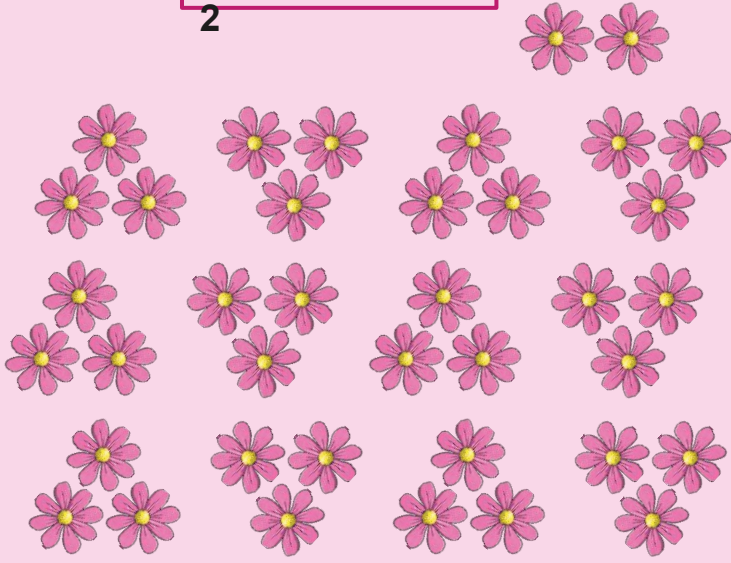
× and ÷

$4 \times 7 \times 7 =$ 

Reveal answer

$38 \div 3 =$ 12 remainder 2

Reveal answer



Place Value

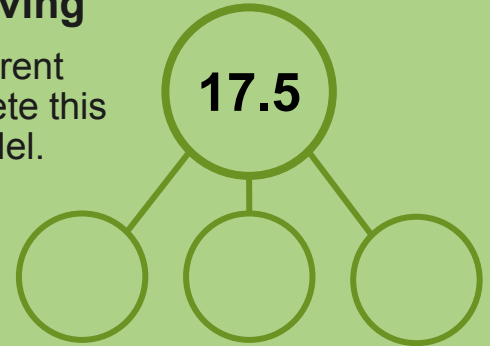
Reveal answer

Put these numbers in order from smallest to greatest:

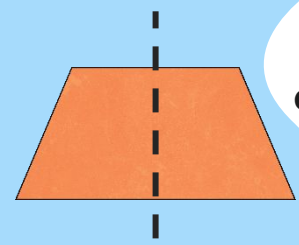
8036 8063 8306 8630

Problem Solving

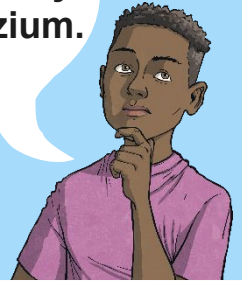
Find three different ways to complete this part whole model.



Reasoning



I have drawn a line of symmetry on this trapezium.



Is Jamil correct? Explain your reasoning.

+ and -

4015

- 2859

Reveal answer



Reveal answer

Place Value

What numbers are hidden on the number line?



Reveal answer

× and ÷

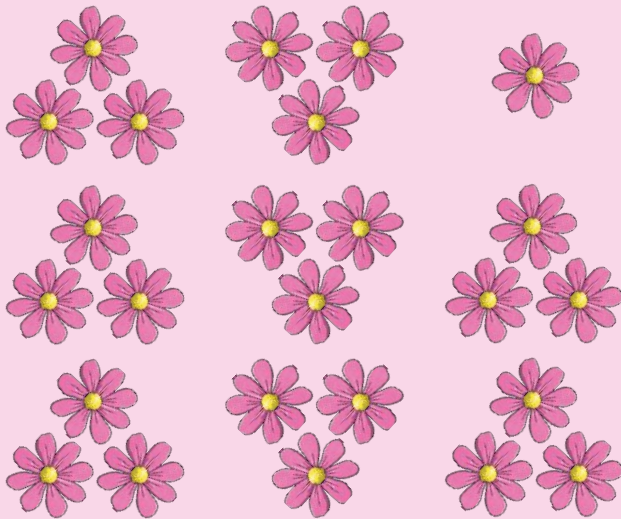
$3 \times 7 \times 3 =$



Reveal answer

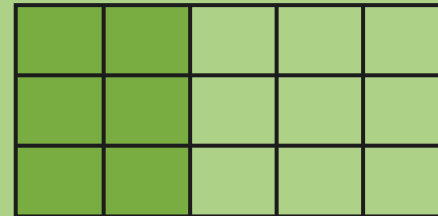
$25 \div 3 =$ 8 remainder 1

Reveal answer



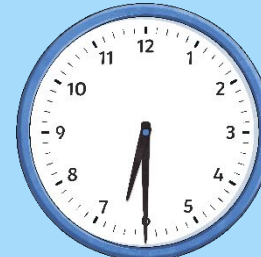
Problem Solving

How many parts of this shape need to be coloured in to show $\frac{2}{5}$?



6

Reasoning



It is eight and a half hours since midday.

Is Alison correct? Explain your reasoning.



+ and -

$3000 + 90 =$



Reveal answer

$4090 - 300 =$



Reveal answer

× and ÷

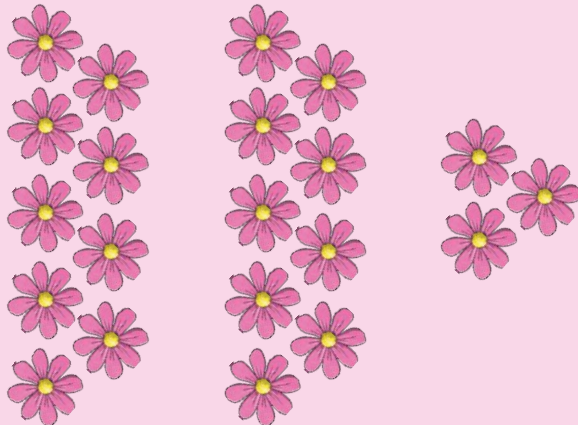
$9 \times 9 \times 8 =$



Reveal answer

$21 \div 9 =$ 2 remainder 3

Reveal answer



Place Value

Reveal answer

What are the next three numbers in this sequence?

225

200

175

150

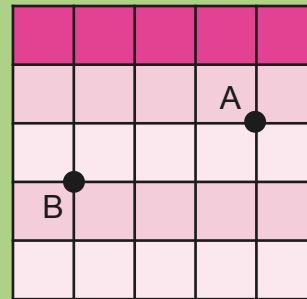
125

100

Problem Solving

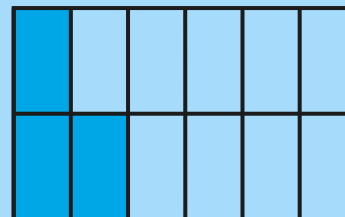
Reveal answer

Describe the translation from point A to point B.

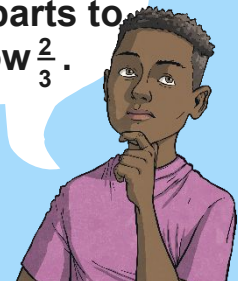


3 left and 1 down or 1 down and 3 left

Reasoning



I need to colour in five more parts to show $\frac{2}{3}$.



Is Jamil correct? Explain your reasoning.



twinkl

