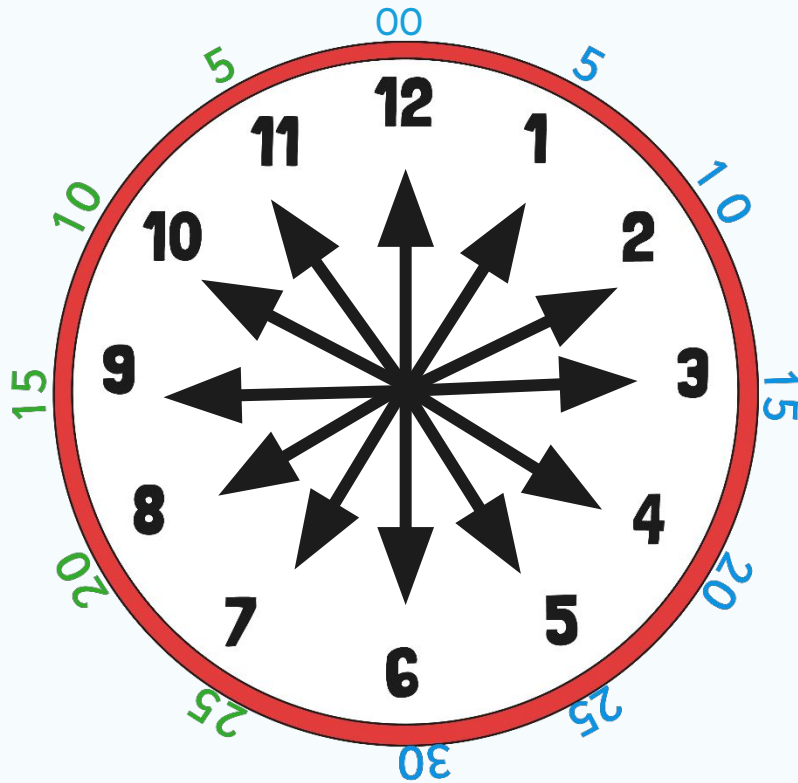




**Converting Time
Between
12 and 24
Hour Clocks**

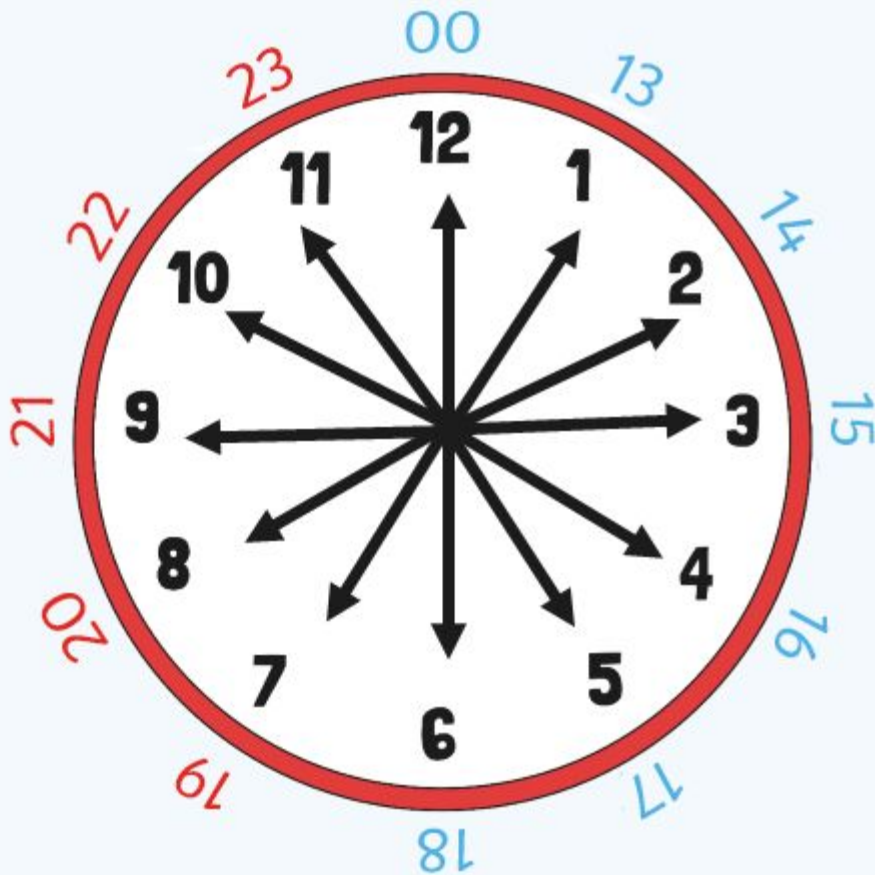
twinkl



Each number on the clock represents 5 minutes. So we can count round in 5s.

From o'clock to half past, we count in minutes '**past**' the hour.

Once we get to half past we start counting in minutes '**to**' the hour.



On a 24 hour clock, once we get past 12pm we add 12 hours on to the time shown on the clock face.

Using this clock, write the 12 hour time and the 24 hour time equivalent. I'll give you two examples to help you:

1pm	=	13:00
2pm	=	14:00

What happens when you get to 12 midnight?

12 hour time

24 hour time

12am (midnight)

00:00

1am

01:00

2am

02:00

3am

03:00

4am

04:00

5am

05:00

6am

06:00

7am

07:00

8am

08:00

9am

09:00

10am

10:00

11am

11:00

12pm (noon)

12:00

1pm

13:00

2pm

14:00

3pm

15:00

4pm

16:00

5pm

17:00

6pm

18:00

7pm

19:00

8pm

20:00

9pm

21:00

10pm

22:00

11pm

23:00

I will call out some 12 hour times. Can you write the same 24 hour time on your whiteboard?

Make sure you use a colon!

24 Hour Digital Clocks

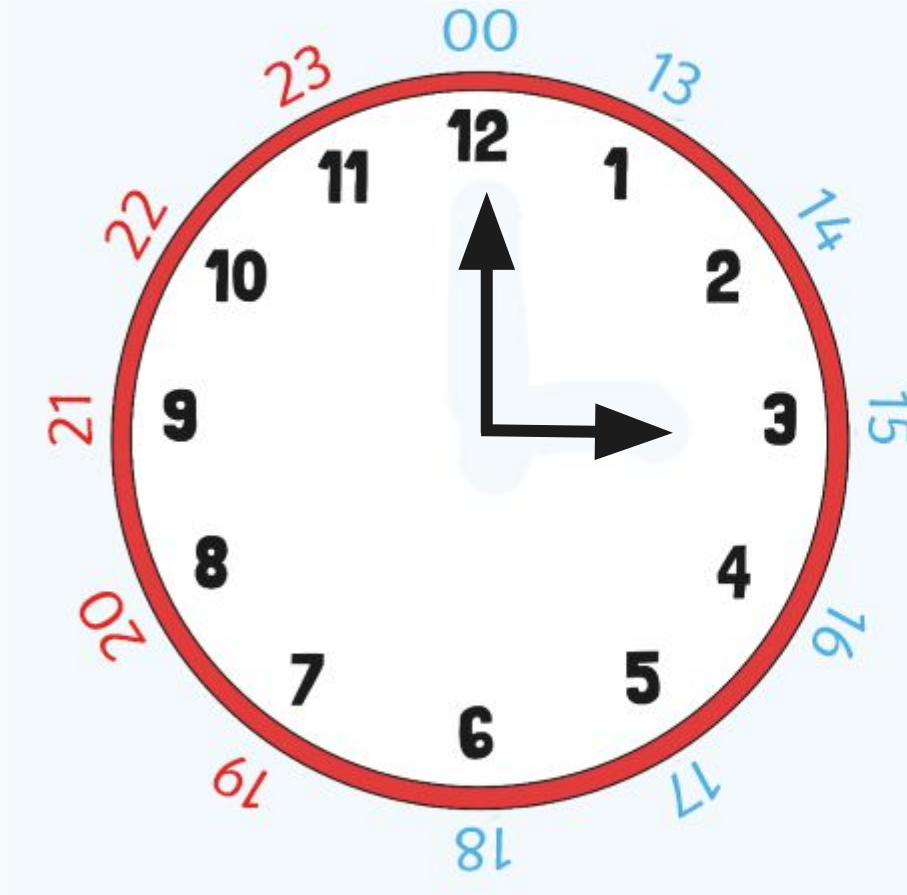


24 hour digital clocks also have an hour and minute display, separated by a colon.

The hours will always be before the colon. The hours go from 0 to 23.

The minutes will always be after the colon.

Converting From 12 to 24 Hour Clocks

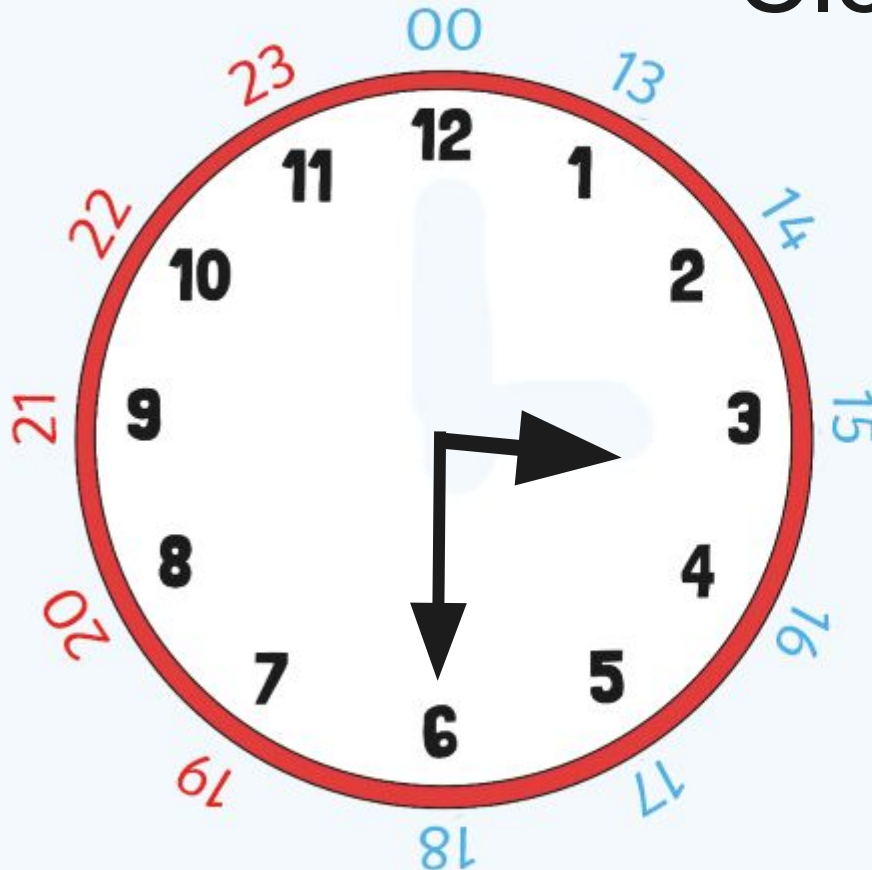


Do the clocks show the same time?

What is the same about the clocks?

What is different?

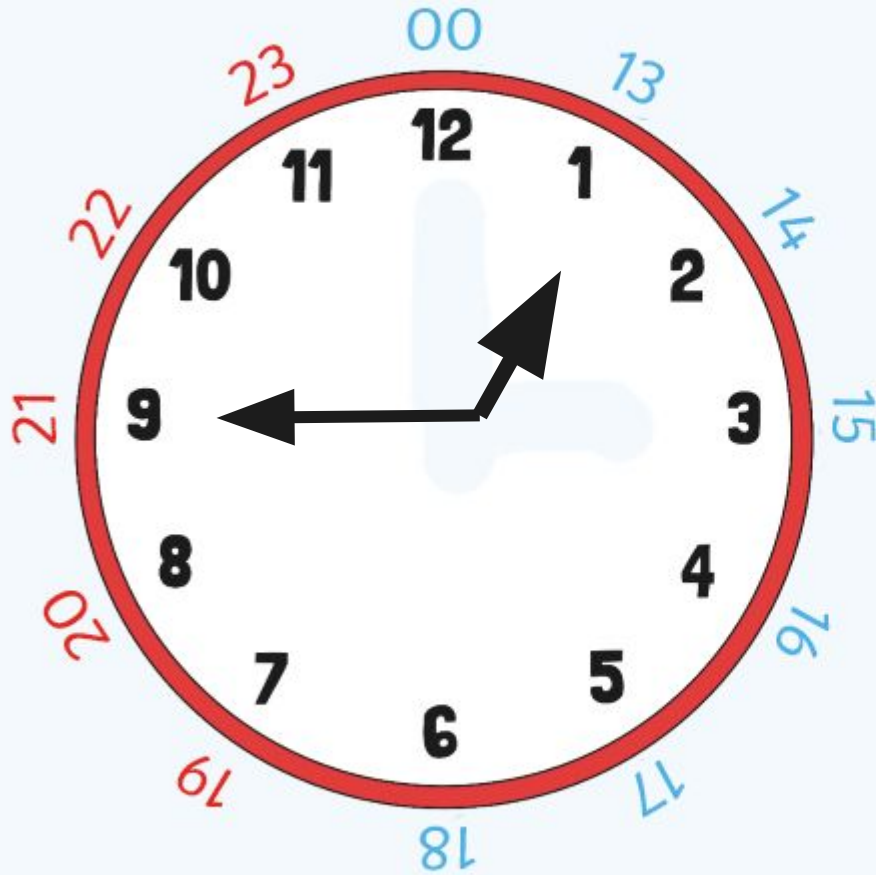
Converting From 12 to 24 Hour Clocks



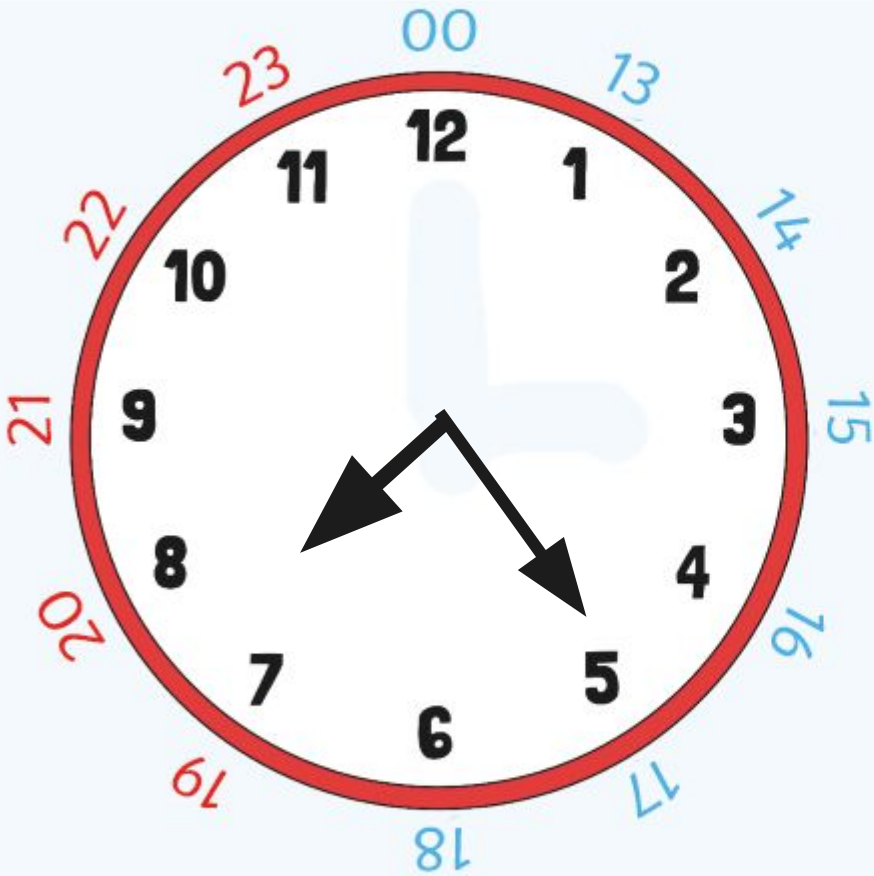
What is the digital time represented by the analogue clock?

On a 24 hour clock this could be two different times, what would they be?

Try This One



What About This One?



Feeling Confident?

