

# Parent Guide to Downloading Kami

We will soon be adding PDF Assignments into your child's Google Classroom that they can complete and hand in digitally, without the need to print.

***In order to do this we need your help.***

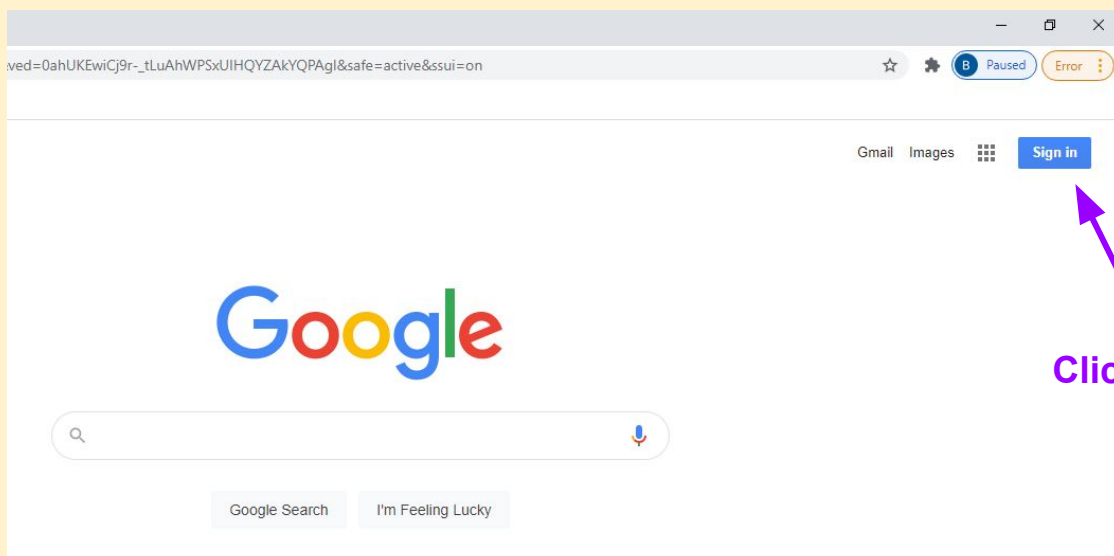
After a bit of research we have found that Kami is the best fit PDF editing tool for us as it works really well with Google Classroom.

Kami is an extension tool that you connect to your google account (e.g. your child's email address).

At school we have added Kami to all Google Accounts in our domain, but we need the children/ parents to activate it so they can use it. Mrs Bransden has put together this instruction leaflet for you to make this easier.

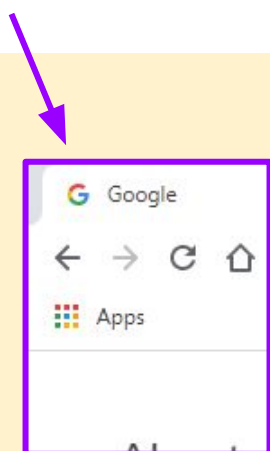
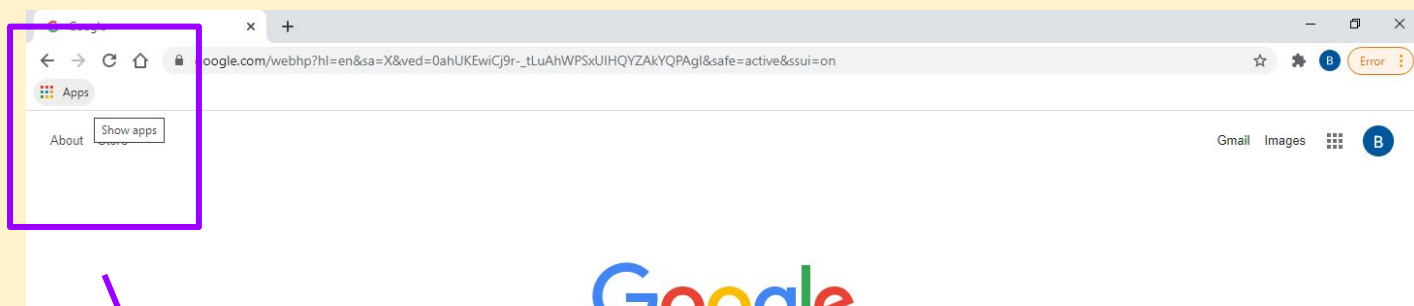
# Parent Guide to Downloading Kami

Firstly, on the device your child is using, log into their Google Account on a web browser (for example, google chrome, safari or internet explorer, wherever you would open a website page). To do this, go to Google.com and click “sign in” on the top right. Enter your child’s school email address and password to log in

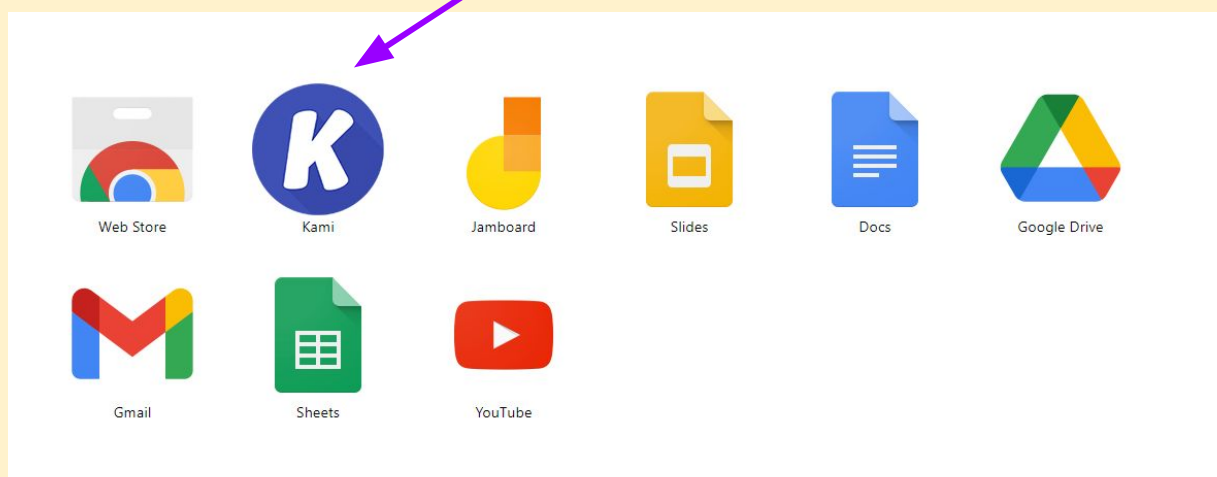


# Parent Guide to Downloading Kami

You will then be returned to the google.com screen but can now see an “Apps Square”\* on the top left.



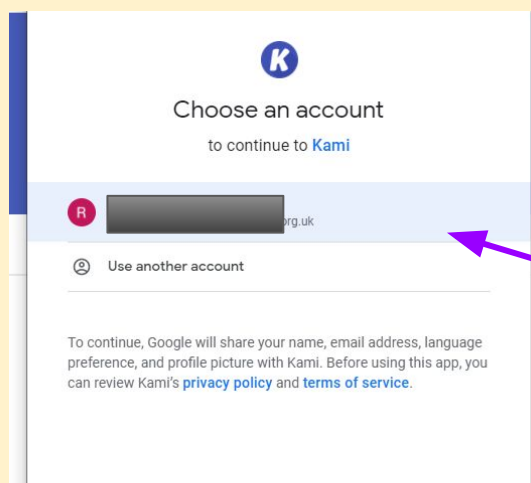
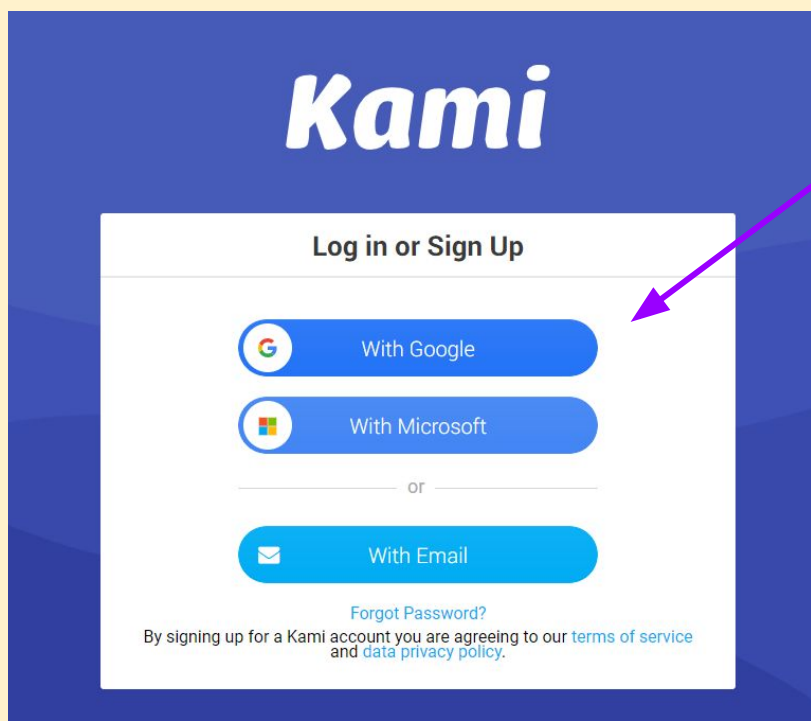
Click here and you will see some of our school apps, including Kami



***\*IF YOU DO NOT SEE THE APPS SQUARE, CONTACT MRS BRANDEN AT SCHOOL FOR MORE INSTRUCTIONS!***

# Parent Guide to Downloading Kami

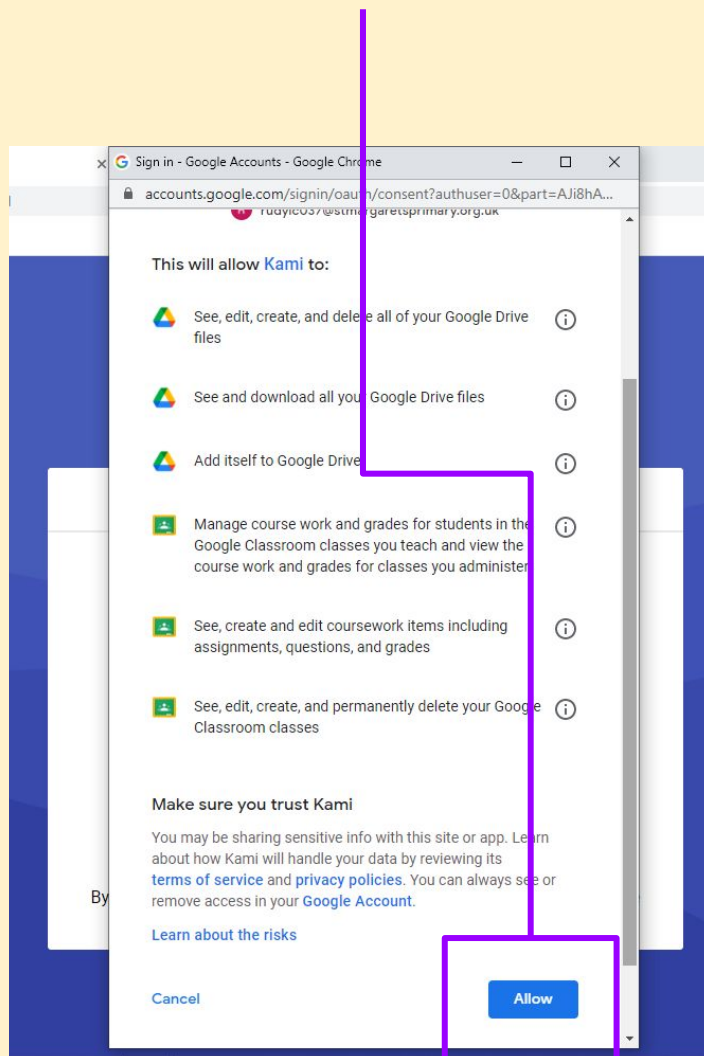
Click the Kami icon and then select “with Google”



Select the correct google account if there is more than one - your child's school email address.

# Parent Guide to Downloading Kami

You will now be asked to give access permission to \*Kami. Click “Allow”



*\*Kami are GDPR compliant and whitelisted for the school to use*

# Parent Guide to Downloading Kami

That is it! You are all set!

Now when your child has a PDF sent to them via gmail or google classroom they will have “Kami” available to them in the “open with” menu.

They can now write and draw directly onto assigned worksheets. Without needing to print!

